



AXXESSMARINE



MANUAL BEAM SWITCHING PROCEDURE VSAT - KU BAND

AXXESS MARINE LLC

support@axxess-marine.com

Phone: +1 954 354 2077

www.axxess-marine.com



SUMMARY

MANUAL BEAM SWITCHING PROCEDURE _____ 3

 Steps _____ 3

 Telnet to the VSAT system _____ 5

 List of Satellites at Geostationary orbit _____ 7

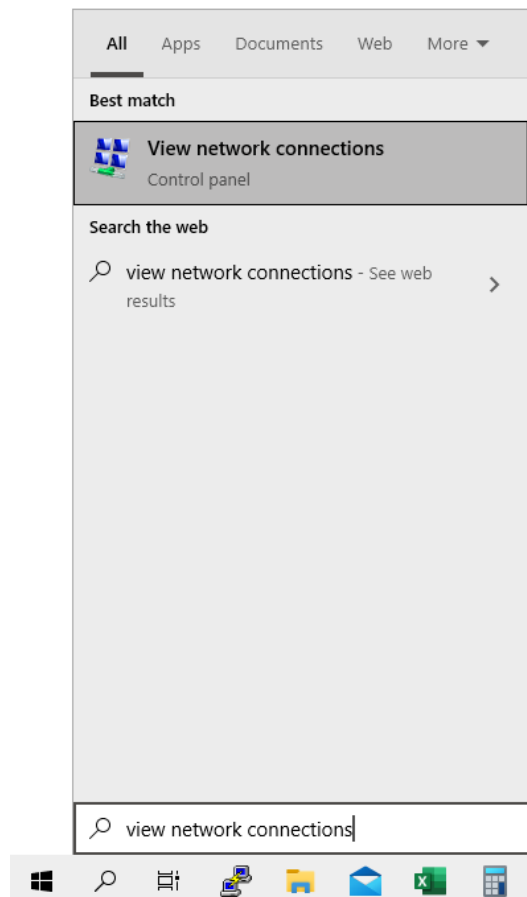
MANUAL BEAM SWITCHING PROCEDURE

Steps

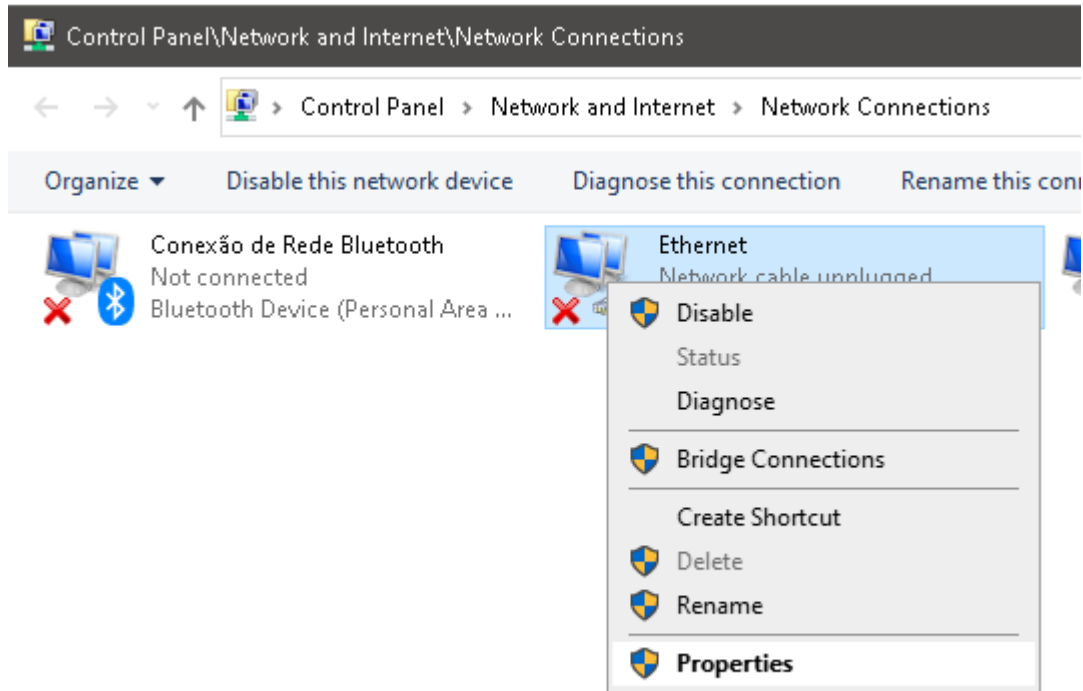
Connect a laptop to the iDirect Modem through one of the 8 ports available, and configure the Ethernet of your laptop as below:



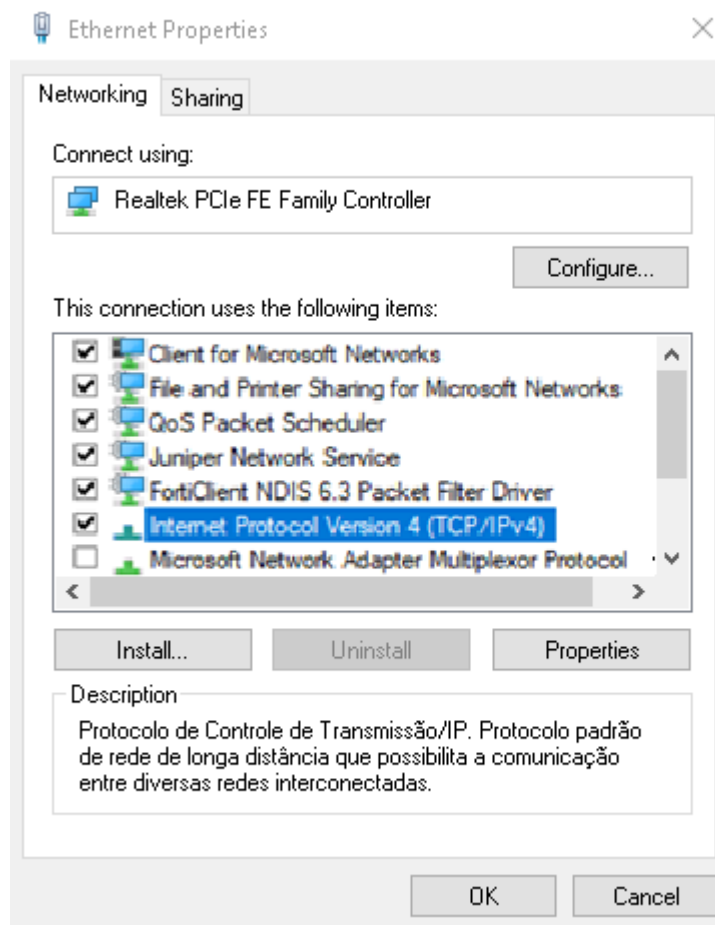
- From your Laptop, click the 'Start' button;
- Type 'View Network Connections'



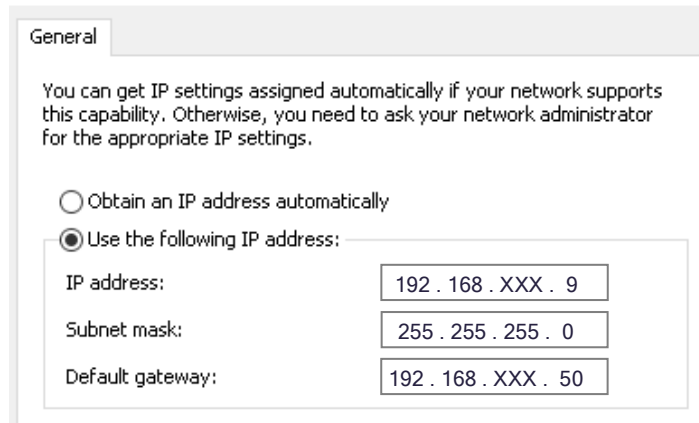
- Right click on the Ethernet port that is connected, click on 'Properties':



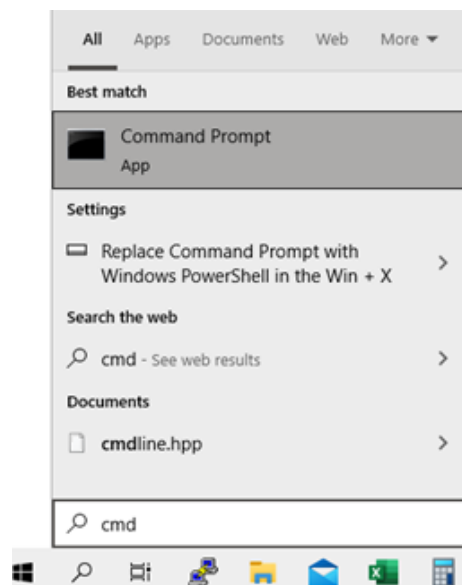
- Look for 'Internet Protocol Version 4 (TCP/IPv4)', double click on it, or click on 'Properties':



- Select 'Use the following IP address' (Modem IP Address) and follow as below:
IP Address: 192.168.XXX.9
Subnet Mask: 255.255.255.0
Default gateway: 192.168.XXX.50



- Click 'Ok' when you have finished, then click 'Ok' on the next window;
- Click on 'Start' button, type 'cmd', click on 'Command Prompt' in the search result:



Type 'ping 192.168.XXX.1' (Modem IP) and see if this is reachable.

```
C:\Users\Axxess Marine>ping 192.168.XXX.50

Pinging 192.168.XXX.50 with 32 bytes of data:
Reply from 192.168.XXX.50: bytes=32 time=1ms TTL=64
Reply from 192.168.XXX.50: bytes=32 time<1ms TTL=64
Reply from 192.168.XXX.50: bytes=32 time=1ms TTL=64
Reply from 192.168.XXX.50: bytes=32 time=1ms TTL=64

Ping statistics for 192.168.XXX.50:
    Packets: Sent = 4, Received = 4, Lost = 0 (0% loss),
    Approximate round trip times in milli-seconds:
    Minimum = 0ms, Maximum = 1ms, Average = 0ms
```

Telnet on Windows

- Click on Start;
- Select Control Panel;
- Choose Programs and Features;
- Click Turn Windows features on or off;
- Select the Telnet Client option;
- Click OK. A dialog box appears to confirm installation. The telnet command should now be available.

Telnet to the VSAT system

- Click on 'Start' Type 'cmd';
- Into the command prompt window, enter: 'telnet 192.168.XXX.1' (Modem IP);
- Login as:
Username: admin
Password: P@55w0rd!

(Password will be subjected to change from Speedcast, it will be kept updated with the vessel)

- You can start entering the command now, there are 3 commonly used commands:

rx snd - get current signal strength, value higher than 10 is considered as good;

beamselector list - displays the currently locked beam and all available beams in the system, the output will display like this:

```
beam_1490 = ATL_IS23_N1_IDRCT_NLAKH_NLAKV
beam_1XXX0 = ATL_IS14_N1_IDIRCT_US_SA
beam_2103 = MAC_G28_N2_IDRCT_SAKV_SAKV
```

beamselector switch xxx-f - manually switch to another beam, 'xxx' is the number associated with the beam. After entering the beamselector switch command, the system will be rebooted quickly and take about 10-15 mins to lock the beam.

(for this case please use **beamselector switch 1490 -f**).

beamselector lock - to lock the beam.

exit - close the telnet session.

List of Satellites at Geostationary orbit

MED/Middle East:

1. NRD_IS35e_N1_IDRCT_EMDKV_EMDKV - IG2
2. MAK_FST_IS906_N1_IDRCT_WH_S1 - IG1
3. MAK_FST_IS905_N7_IDRCT_S2V_S2V - IG1
4. MAK_ABZ_NSS7_N1_IDRCT_EUV_EUH - IG1
5. MAK_FST_IS39_N2_EUKV_EUKV - IG2
6. MAK_FST_IS906_N6_IDRCT_S2H_S2H - IG1

North Atlantic Ocean Region

1. BWI_T14R_N1_IG1
2. BWI_T11_N1_IG1
3. MAK_HAG_IS34_N3_IG2

USA/Caribbean

1. HAG_G19_N1_IG5
2. ISP_ECHOSTAR9_N1_IG1
3. MAK_HAG_G3C_N1_IG1
4. MAK_HAG_IS904_N1_IG1
5. MAK_MIA_E133WA_N2_IG1
6. MAK_HAG_IS35e_N7_IG1
7. SHD_T12V_N3_IG2

Asia/Australia

1. BWR_APSTAR9_N3_IG1
2. BWR_E172B_N1_IDRCT_ANZV_ANZV
3. FST_IS10_N1_IG1
4. HEN_JCSAT110A_N1_IG1
5. MAK_BWR_SBC2_N1_IG1
6. HKT_ST2_N1_IG1
7. HKT_T18V_N1_IG1
8. HPT_E172A_N1_IDRCT_NPH_SEP_copol
9. MAK_FST_IS10_N3_IDRCT_ESTKH_AKV
10. MAK_HKT_IS1R_N1_IG1
11. MAK_MSN_T18V_N1_IG2
12. MAK_MSN_IS18_N1_IG1
13. MSN_IS19_N2_IG1
14. NAP_IS19_N5_IDRCT_NWP_IG1
15. TGN_IS22_N4_IG1